

# INDUCTION SLIDES AUGUST 2020/21 ACADEMIC YEAR

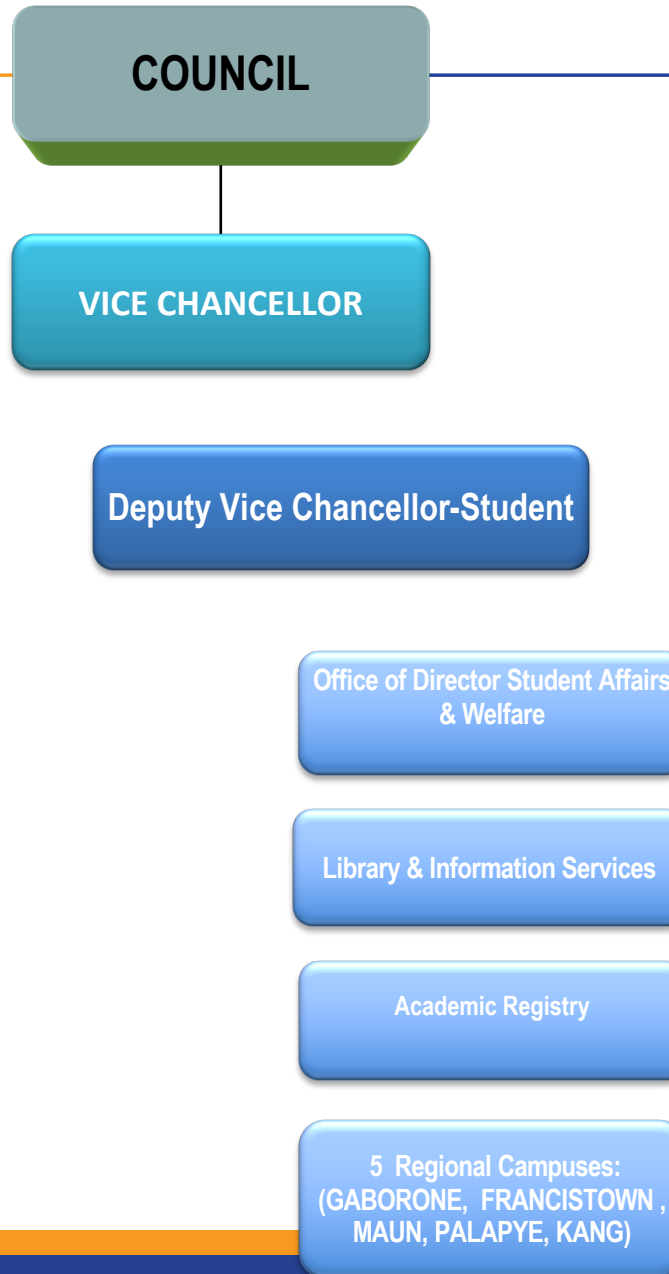
LECHANI GOITSEMANG  
DIRECTOR- STUDENT AFFAIRS AND  
WELFARE SERVICES

# INDUCTION SLIDES 2020

**THE UNIVERSITY IS CURRENTLY OPERATING  
UNDER 3 DIVISIONS WHICH ALL FALL  
UNDER THE VICE CHANCELLOR:**

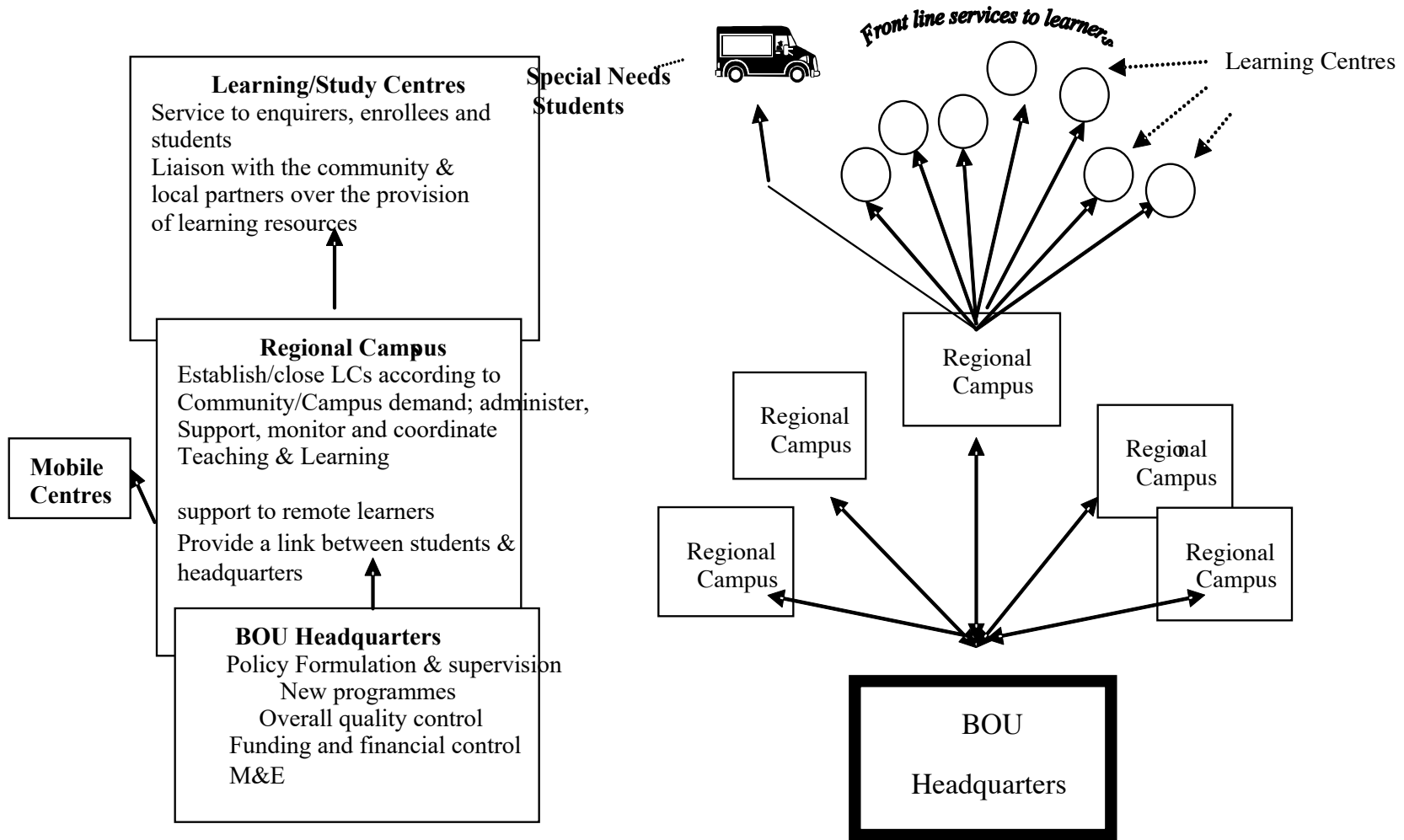
- **1.ACADEMIC SERVICES**
- **2.STUDENT SERVICES**
- **3. CORPORATE SERVICES**

# STUDENT SERVICES DIVISION



# STUDENT SUPPORT MODEL

## *The BOU Student Support Model*



# Summary of Teaching & Learning Methodology in 2020

---

1. All interactions and Communication will be through the following student Platforms;
  - Student Portal
  - Student Centre
  - BOU website
2. You will receive a student Induction Package in the student Centre with the following;
  - Induction slides
  - Student Induction Guide
  - Programme Overview Slides
  - Delivery Schedule
  - Academic Calendar
3. You will receive Your Programme Semester Modules on the Student Portal with the Following;
  - Assignments for Semester 1
  - Discussion and Chat Forums Schedule
  - Project/Research Supervisor & related Information
  - Contacts for your Tutors and Coordinators
4. Important Policies and Procedure about your Conduct and Integrity during your stay at BOU are available on the Student Centre.
5. Note that there will not be any Face to Face Tutorials this Academic Year.

# Services to facilitate learning, retention, progression, completion to ensure a superior student learning experience

- Students are offered a variety of robust learner support interventions to facilitate their learning, retention and progression, and enhance their success rate as well as acquire an enjoyable learning experience. **Some of the services offered to the student are:**
- **Administrative support** where students are assisted with applications, registration, assessment administration and graduation
- **Tuition Support** related to diverse interaction with study materials & academic staff, assignment cycle management, examination administration, Induction packages and academic support.
- **Guidance and Counselling** support including Psychosocial support services, Student Welfare Initiatives and Student Development Initiatives.
- **Communication**- liaison between the student and the rest of the university organs using various communication modes such as telephone, letter, various IT media, information brochures, flyers and meetings.
- **Learning Materials** - interactive and up-to-date learning materials and media shared with students per Course.
- **Student Advocacy**- student engagement throughout their study cycle.

# BOU STUDENT PROFILE

---

## **Botswana Open University (BOU) Student diversity includes among others:**

- Vast geographical distribution
- Age variance
- Diverse Educational backgrounds
- Gender,
- Motivation to learn
- Ability to access available resources.
- International students
- School leavers
- Learners with disability
- Employment status
- Marital Status
- Parental status
- Funding status
- Disadvantaged Students
- Inmates
- Limited access to Technology
- Different Learning Experiences
- Remoteness

# STUDENT SUPPORT FUNCTIONS

## **Administrative Support**

- Application Process
- Selection Process
- Admission Process
- Fee Payment Process
- Registration/Enrolment Process
- Materials Distribution Process
- Records management Process
- Information and Communication Process



# STUDENT SUPPORT FUNCTIONS CONT

---

## **Guidance & Counselling**

- Pre-enrolment Guidance
- Timetabling/Scheduling
- Individual Consultations
- Inductions/Training
- Examination preparations
- Online interactions support
- Assignment management
- Student Performance
- Study skills Interventions
- Assessment and Profiling
- Psychosocial support-counselling including referrals

# STUDENT SUPPORT FUNCTIONS CONT

---

## **Tuition/Academic Support**

- Tutor Management,
- Teaching & Learning Interactions on Moodle
- Assignment Management,
- Examination Administration
- Peer Interactions
- How to access Resources
- Academic Referrals
- Library and Information Services
- Graduation support

# Student Support Policies available for you on the student centre:

---

1. Student Representative Council Policy
2. Student Conduct and Disciplinary Policy
3. Protection of Enrolled Learners Policy
4. Tertiary Enrollment Policy
5. Open Schooling Enrollment Policy
6. BOU Student Integrity Policy
7. BOU Student Assessment Handbook

# THANK YOU

---

HAVE AN ENJOYABLE AND MEMORABLE  
LEARNING EXPERIENCE. WE ARE HERE FOR YOU.